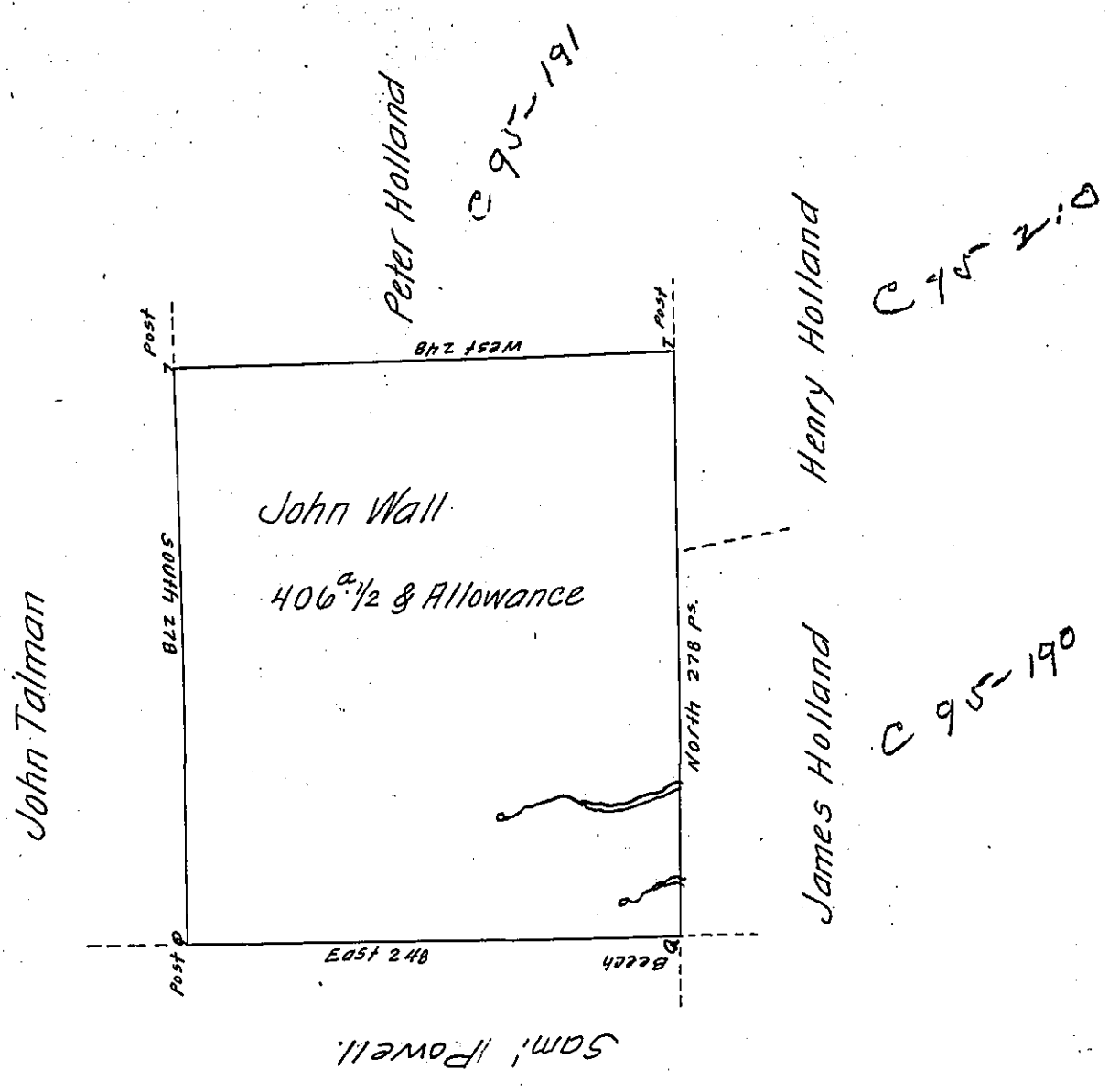


FORM No. 1.



A Draught of a Tract of Land Called — Situate on the Waters of Salt Lick Creek, Adjoining Land of Samuel Powell and others, in Stoke Township, Northumberland County, Surveyed on the 24<sup>th</sup> day of Sep<sup>r</sup> 1786 for John Wall by Virtue of his Warrant bearing date the 18<sup>th</sup> day of July 1786. Containing four Hundred and Six Acres and an half and allowance of Six <sup>0</sup>/<sub>100</sub> Cent for Roads &c.

by  
 To John Lukens Esq<sup>r</sup> } W<sup>m</sup> Gray D.S.  
 Surveyor Gen<sup>l</sup> }<sup>+</sup> now Luzerne —

IN TESTIMONY that the above is a copy of the original remaining on file in the Department of Internal Affairs of Pennsylvania, made conformably to an Act of Assembly approved the 16th day of February 1833, I have hereunto set my hand and caused the Seal of said Department to be affixed at Harrisburg, this thirtieth day of April 1907.

*Isaac R. Brown*  
 Secretary of Internal Affairs.